

LEC MEDICAL

LABORATORY FREEZERS

We offer a wide range of Laboratory freezers to suit your needs, from smaller countertop units, ideal for when space is limited, space efficient under-counter models that fit easily under working benches, and a range of larger, freestanding units, ideal for when extra storage capacity is required.

Efficient Under-counter Height
FULL HEIGHT OF UNIT 845MM

New Advanced Controller
Manage the internal temperature and record min/max settings at the touch of a button

Fitted Lock
Maintains security and helps prevent unauthorised access. All units come with 2 keys

Anti Microbial Handle
Helps prevent the growth of bacteria and minimise the potential for cross contamination

Wire Shelves and Basket
Enables optimal airflow inside the unit. Shelf positions can be varied for maximum storage capacity

Fitted Rollers
For easy moving and cleaning

LSF151UK Under-counter Laboratory Freezer					
Model Number	SKU Code	Gross Capacity	Dimensions H x W x D (mm)	Weight (kg)	Temperature Range Freezer
LSF151UK	444440968	151 litres	845 x 595 x 595	36	-18°C to -25°C

We now sell on-shelf organisers compatible with many of our units, please see [page 16](#) for further details.



COUNTERTOP - ISU27C



UNDER-COUNTER - ISU37C



FREESTANDING - LSF232UK



Other Laboratory Freezers

Model Number	SKU Code	Gross Capacity	Dimensions H x W x D (mm)	Weight (kg)	Temperature Range Freezer
ISU27C	444441802	50 litres	562 x 500 x 510	17	-18°C to -20°C
ISU37C	444441803	102 litres	830 x 495 x 620	33	-18°C to -20°C
LSF232UK	444440970	232 litres	1570 x 595 x 634	60	-18°C to -25°C

Please see [page 12](#) for fridge-freezer options

LEC MEDICAL

LABORATORY FRIDGE-FREEZERS

Offering the flexibility of a fridge and freezer in the same unit, and maximising storage space, Lec Medical provides a comprehensive range of combination fridge-freezers in different sizes to suit your requirements.



New Advanced Controller

Manage the internal temperature and record min/max settings at the touch of a button



Fitted Lock

Maintains security and helps prevent unauthorised access. All units come with 2 keys



Wire Shelves

Enables optimal airflow inside the unit. Shelf positions can be varied for maximum storage capacity



Plastic Baskets, Flaps and Door Organisers

Maximise space and offer protection to contents



Anti Microbial Handles

Helps prevent the growth of bacteria and minimise the potential for cross contamination



Fitted Rollers*

For easy moving and cleaning



*selected models

159L

104L



LSC263UK Freestanding Laboratory Fridge-Freezer

Model Number	SKU Code	Gross Capacity	Dimensions H x W x D (mm)	Weight (kg)	Temperature Range
LSC263UK	444440973	263 litres	1680 x 540 x 600	58	FRIDGE: +2°C to +10°C FREEZER: -18°C to -25°C

Laboratory Fridge-freezers from Lec Medical

Fridge-freezers offer the optimal storage flexibility with two distinct temperature zones.

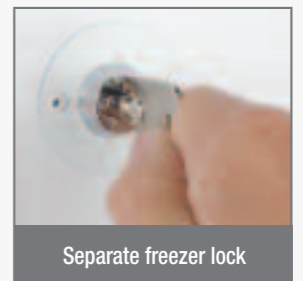
Flexible storage

These units are a popular choice when space is limited and we offer a wide variety of sizes, from countertop units through to large freestanding alternatives.



Peace of mind security

All Lec Medical units come with a fitted lock to ensure only authorised personnel have access, and our new freestanding fridge-freezers have unique separate fitted locks for the fridge and freezer compartments.

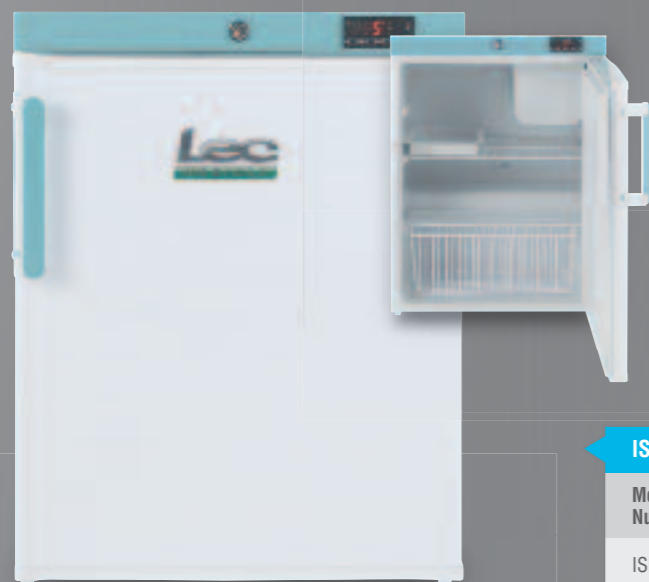


Separate freezer lock

LEC MEDICAL

OTHER LEC MEDICAL FRIDGE-FREEZERS

Offering the flexibility of a fridge and freezer in the same unit, and maximising storage space, Lec Medical provides a comprehensive range of combination fridge-freezers in different sizes to suit your requirements.



COUNTERTOP

6.5L
77L



Internal Freezer Compartment



ISR27C Countertop Laboratory Fridge-Freezer

Model Number	SKU Code	Gross Capacity	Dimensions H x W x D (mm)	Weight (kg)	Temperature Range
ISR27C	444441804	83.5 litres	660 x 502 x 540	25	FRIDGE: +2°C to +10°C FREEZER: -18°C to -20°C



UNDER-COUNTER

13L
106L



Internal Freezer Compartment



LSC119UK Under-counter Laboratory Fridge-Freezer

Model Number	SKU Code	Gross Capacity	Dimensions H x W x D (mm)	Weight (kg)	Temperature Range
LSC119UK	444440972	119 litres	860 x 540 x 600	34	FRIDGE: +2°C to +10°C FREEZER: -18°C to -25°C

NEW



FREESTANDING

190L

134L



LSC324UK Freestanding Laboratory Fridge-Freezer

Model Number	SKU Code	Gross Capacity	Dimensions H x W x D (mm)	Weight (kg)	Temperature Range
LSC324UK	444441790	324 litres	1870 x 600 x 600	70	FRIDGE: +2°C to +10°C FREEZER: -18°C to -25°C



Our NEW Freestanding LSC324

The LSC324 is our largest fridge-freezer unit yet, offering a large 324 litre capacity in a space effective 600mm x 600mm footprint.

LEC MEDICAL

COST EFFECTIVE & SIMPLE STORAGE ALTERNATIVES

Lec Medical offers a range of storage solutions compatible with selected models in our Laboratory refrigeration range, enabling you to manage the space inside the fridge effectively and safely.

MIX & MATCH

On-shelf organisers are all interchangeable and Lec Medical can offer a bespoke service to create the Laboratory refrigeration storage solution to best suit your needs.



Anti-bacterial Sit On Shelf Organisers

Our tough plastic shelf organisers are perfect for organising drugs and vaccines most effectively. They simply sit on existing fridge shelves.

Key Features

- ✓ 448mm wide x 350mm deep footprint – suitable for many Lec models or other units already in your laboratory
- ✓ Anti-bacterial plastic inhibits bacterial growth and minimises the risk of cross contamination
- ✓ Supplied with 17mm pre-drilled holes to maintain effective cooling airflow within the fridge
- ✓ Extra dividers available separately to compartmentalise contents



Sit On Shelf Organiser

	SKU Code	Dimensions W x D (mm)
Base Tray	444441879	448 x 350
Dividers	444441880	-

Suitable for the following models:



TEMPERATURE MAPPING



LABORATORY RANGE EXTRAS



The Lec Medical data logger is a simple and reliable way of recording the temperature inside your Laboratory fridge over a period of time.

EASY TO SET UP

This USB compatible data recorder is a simple and cost effective way of recording temperature within all Laboratory refrigerators.

Simply plug the data logger into your PC and set the logging rate and start time.

Then place the unit on a shelf inside the fridge, shut the door, and the logger will record the temperature at the intervals you select (every 10 seconds up to every 12 hours).

EASY TO DOWNLOAD

We supply the logger with software, allowing the user to quickly and easily configure the unit to meet their requirements.

Simply plug the logger into any USB port on your computer and download the stored data.

You can use this data in many ways and it can be easily displayed as a graph, enabling you to quickly view the temperature history inside the fridge over time.

LONG LASTING

✓ The logger works in a wide temperature range from -35°C to +80°C

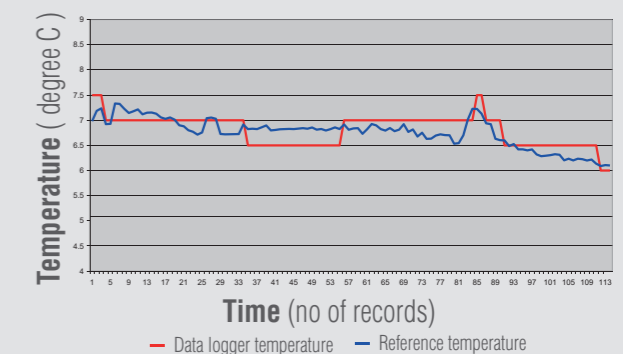
✓ Large memory capacity - you can store up to 16,382 readings

✓ The Lec Medical data logger has an easy to replace lithium battery for regular or extended use

Lec Medical Data Logger

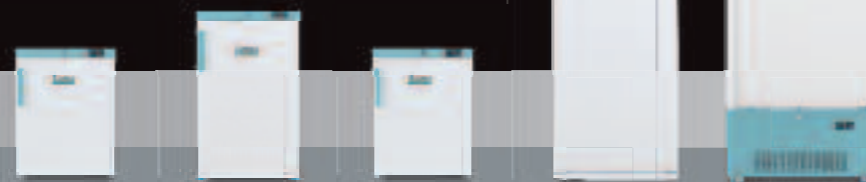
Model Number	ATMDL01
SKU Code	444448729
Dimensions H x W x D (mm)	25 x 25 x 100
Measurement Range	-35°C to +80°C
Accuracy	+/- 1°C

Example Output



LEC MEDICAL

DETAILED SPECIFICATIONS



Model No	LR207C	LR307	LSR151UK	LSR288 UK	LR1607C
Description	Countertop	Under-counter	Under-counter	Freestanding	Freestanding
SKU code	444441799	444441800	444440964	444440966	444441801
EAN code	5034648485689	5034648493264	5052263009646	5052263009660	5034648485696
Gross capacity (L)	82	107	151	288	475
Net capacity (L)	67	103	145	284	441
External width (mm)	502	495	595	595	695
External depth (mm)	540	620	595	634	910
External height (mm)	660	830	845	1570	1688
Packed width (mm)	520	560	657	657	770
Packed depth (mm)	595	655	694	734	950
Packed height (mm)	675	850	872	1585	1810
Product weight (kg)	27.5	103	36	58	95
Packed weight (kg)	30.5	107	40	63	116
Country of origin	UK	UK	UK	UK	UK
Internal dimensions (wxdxh)	415x340x540	403x400x540	500x450x705 step 165(d)x185(h)	480x445x1382 step 175(d)x255(h)	550x670x1170
External finish	White	White	White	White	White
Internal finish	White	White	White	White	White
Type of plastic	SRL800 (HIPS/ABS Mix)	SRL800 (HIPS/ABS Mix)	SRL800 (HIPS/ABS Mix)	SRL800 (HIPS/ABS Mix)	SRL800 (HIPS/ABS Mix)
Temperature range	+2°C to +10°C	+2°C to +10°C	+2°C to +10°C	+2°C to +10°C	+2°C to +10°C
Colour	White/green	White/green	White/green	White/green	White/green
Door type	Solid	Solid	Solid	Solid	Solid
Door style	Hinged, reversible	Hinged, reversible	Hinged, reversible	Hinged, reversible	Hinged, R/H only
Door open depth (mm)	976	1050	1165	1185	1596
Replacement door seal	No	No	No	No	No
Open door sensor	No	No	Yes	Yes	No
Lock	Yes	Yes	Yes	Yes	Yes
Adjustable feet (number & position)	No	2, front	2 adjustable feet 2 rear rollers	2 adjustable feet 2 rear rollers	Castors
Temperature display on panel	Yes	Yes	Yes	Yes	Yes
Temperature alarm	Yes	Yes	Yes	Yes	Yes
Number of shelves	2	2	3	5	5
Number of shelf positions	2	4	6	12	30
Shelf size (dxwxh) (mm)	2: 438x274x6	2: 427x374x6	3: 320x520x6	5: 340x497x6	5: 536x609x6
Shelf material	Wire	Wire	Wire	Wire	Wire
Moulded drawers	0	0	0	1 Solid	0
Adjustable door bins	0	0	2 Wire	4 Solid	0
Interior light	No	No	No	No	No
Fan	No	No	No	No	No
Spark free	Yes	Yes	Yes	Yes	Yes
Auto or manual defrost	Automatic	Automatic	Automatic	Automatic	Automatic
Controller type	Digital, external	Digital, external	Digital, external	Digital, external	Digital, external
Climate class	N	N	SN	SN	N
Refrigerant type	R134a	R134a	R600a	R600a	R134a
CFC free	Yes	Yes	Yes	Yes	Yes
HFC free	No	No	Yes	Yes	No
HCFC Free	Yes	Yes	Yes	Yes	Yes
UK 3 pin plug	Yes	Yes	Yes	Yes	Yes
Other plug types available	Yes	Yes	Yes	Yes	Yes
Voltage supply	230	230	230	230	230
Aux output	No	No	No	No	No
Insulation thickness (mm)	30	35	45	60	65
Insulation type	Cyclopentane	Cyclopentane	Cyclopentane	Cyclopentane	Cyclopentane
Anti microbial handle	Yes	Yes	Yes	Yes	No



Model No	ISU27C	ISU37C	LSF151UK	LSF232UK	ISR27C	LSC119UK	LSC263UK	LSC324UK
Description	Countertop	Under-counter	Under-counter	Freestanding	Countertop	Under-counter	Freestanding	Freestanding
SKU code	444441802	444441803	444440968	444440970	444441804	444440972	444440973	444441790
EAN code	5034648485726	5034648493271	5052263009684	5052263009707	5034648485719	5052263009721	5052263009738	5052263017900
Gross capacity (L)	50	102	151	232	83.5 77 Fridge 6.5 Freezer	119 106 Fridge 13 Freezer	263 159 Fridge 104 Freezer	324 190 Fridge 134 Freezer
Net capacity (L)	38	87	134	212	80.5	117	245	302
External width (mm)	500	495	595	595	502	540	540	600
External depth (mm)	510	620	595	634	540	600	600	600
External height (mm)	562	830	845	1570	660	860	1680	1870
Packed width (mm)	520	560	657	657	620	602	597	657
Packed depth (mm)	595	655	694	734	595	639	684	734
Packed height (mm)	590	850	872	1585	675	877	1700	1885
Product weight (kg)	17	33	36	60	25	34	58	70
Packed weight (kg)	20	36.5	40	65	27	36	64	78
Country of origin	UK	UK	UK	UK	UK	UK	UK	UK
Internal dimensions (wxdxh)	345x330x365	414x415x683	500x450x705 step 165(d)x185(h)	432x430x1300 step 190(d)x255(h)	415x370x540	Fri 450x450x525 Fre 400x295x120 step 155(d)x225(h)	Fri 457x450x725 Fre 408x415x670 step 170(d)x220(h)	Fri 510x430x805 Fre 463x445x780 step 250(d)x260(h)
External finish	White	White	White	White	White	White	White	White
Internal finish	White	White	White	White	White	White	White	White
Type of plastic	SRL800 (HIPS/ABS Mix)	SRL800 (HIPS/ABS Mix)	SRL800 (HIPS/ABS Mix)	SRL800 (HIPS/ABS Mix)	SRL800 (HIPS/ABS Mix)	SRL800 (HIPS/ABS Mix)	SRL800 (HIPS/ABS Mix)	SRL800 (HIPS/ABS Mix)
Temperature range	-18°C to -20°C	-18°C to -20°C	-18°C to -25°C	-18°C to -25°C	Fri +2°C to +10°C Fre -6°C to -9°C	Fri -2°C to +10°C Fre -18°C to -25°C	Fri -2°C to +10°C Fre -18°C to -25°C	Fri +2°C to +10°C Fre -18°C to -25°C
Colour	White/green	White/green	White/green	White/green	White/green	White/green	White/green	White/green
Door type	Solid	Solid	Solid	Solid	Solid	Solid	Solid	Solid
Door style	Hinged, reversible	Hinged, reversible	Hinged, reversible	Hinged, reversible	Hinged, reversible	Hinged, reversible	Hinged, reversible	Hinged, reversible
Door open depth (mm)	976	1050	1165	1185	976	1090	1110	1190
Replacement door seal	No	No	No	No	No	No	No	No
Open door sensor	No	No	Yes	Yes	No	Yes	Yes	Yes
Lock	Yes	Yes	Yes	Yes	Yes	Yes	Yes	Yes
Adjustable feet (number & position)	No	1, front	2 adjustable feet 2 rear rollers	2 adjustable feet 2 rear rollers	2 adjustable feet 2 rear rollers	2 adjustable feet 2 rear rollers	-	2 adjustable feet 2 rear rollers
Temperature display on panel	Yes	Yes	Yes	Yes	Yes	Yes	Yes	Yes
Temperature alarm	Yes	Yes	Yes	Yes	Yes	Yes	Yes	Yes
Number of shelves	1	2	3 baskets	4 baskets, 2 fixed flaps	2	2	3 (fridge)	3 (fridge)
Number of shelf positions	Fixed	Fixed	Fixed	Fixed	Set	4	6	6
Shelf size (dxwxh) (mm)	-	-	-	-	1: 438x274x6 1: 438x137x6	1: 308x448x4.5 1: 200x448x4.5	3: 308x448x4.5	3: 320x505x6
Shelf material	Wire	Wire	Wire baskets	Wire baskets	Wire	Wire	Wire	Wire
Moulded drawers	0	0	0	4 solid	0	1 solid	2 solid (half) (fridge)	2 solid (half) (fridge)
Adjustable door bins	0	0	0	0	0	2 full + 2 half	2 full + 2 half	2 full + 4 half
Interior light	No	No	No	No	No	No	No	No
Fan	No	No	No	No	No	No	No	No
Spark free	Yes	Yes	Yes	Yes	Yes	Yes	Yes	Yes
Auto or manual defrost	Manual	Manual	Manual	Manual	Fridge: Automatic Freezer: Manual	Fridge: Automatic Freezer: Manual	Fridge: Automatic Freezer: Manual	Fridge: Automatic Freezer: Manual
Controller type	Digital, external	Digital, external	Digital, external	Digital, external	Digital, external	Digital, external	Digital, external	Digital, external
Climate class	N	N	SN	SN	N	SN	SN	SN
Refrigerant type	R134a	R134a	R600a	R600a	R134a	R600a	R600a	R600a
CFC free	Yes	Yes	Yes	Yes	Yes	Yes	Yes	Yes
HFC free	No	No	Yes	Yes	No	Yes	Yes	Yes
HCFC Free	Yes	Yes	Yes	Yes	Yes	Yes	Yes	Yes
UK 3 pin plug	Yes	Yes	Yes	Yes	Yes	Yes	Yes	Yes
Other plug types available	Yes	Yes	Yes	Yes	Yes	Yes	Yes	Yes
Voltage supply	230	230	230	230	230	230	230	230
Aux output	No	No	No	No	No	No	No	No
Insulation thickness (mm)	30	35	45	60	30	45	60	60
Insulation type	Cyclopentane	Cyclopentane	Cyclopentane	Cyclopentane	Cyclopentane	Cyclopentane	Cyclopentane	Cyclopentane
Anti microbial handle	Yes	Yes	Yes	Yes	Yes	Yes	Yes	Yes



Wolflabs

Wolf Laboratories Limited

www.wolflabs.co.uk

Tel: 01759 301142

Fax: 01759 301143

sales@wolflabs.co.uk



Use the above details to contact us if this literature doesn't answer all your questions.

Pricing on any accessories shown can be found by keying the part number into the search box on our website.

The specifications listed in this brochure are subject to change by the manufacturer and therefore cannot be guaranteed to be correct. If there are aspects of the specification that must be guaranteed, please provide these to our sales team so that details can be confirmed.

