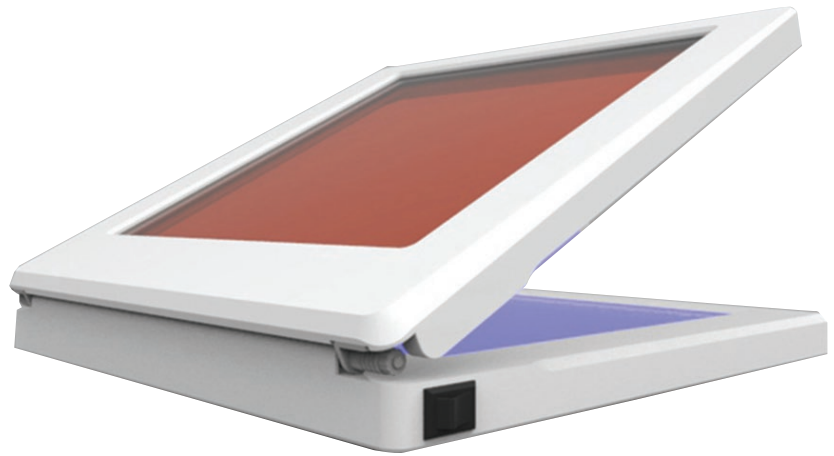


FEATURES:

- No DNA damage to samples.
- Safer for user - No UV light.
- High Purity LED light.
- Compact Design
- Strong Metal enclosure with stainless steel filter frame.
- Fast start up.



safeVIEW MINI2

Blue light transilluminator

Our new safeVIEW MINI2 LED transilluminator offers the user a safe way to view and document their samples. This light source also has the added advantage that it does not cause damage to DNA or RNA that would normally be associated with uv light.

multiSUB mini and multiSUB midi tanks. With a compact design, each transilluminator serves as the perfect workstation for viewing and working with fluorescently-stained protein and nucleic acid gels.

They are supplied as a standalone unit and can be used with our

TECHNICAL SPECIFICATION

Filter Size	15.4 x 15.4cm
Light Source	470nm BLUE LED's
Size	200x200x28.7mm
Weight	1.52Kg
Voltage	110- 240V (Selectable)

ORDERING INFORMATION

safeVIEW MINI2	Safeview BLUE Light Transilluminator 15.4 x 15.4cm
----------------	--

Distributor



Wolflabs

Wolf Laboratories Limited

www.wolflabs.co.uk

Tel: 01759 301142

Fax: 01759 301143

sales@wolflabs.co.uk



Use the above details to contact us if this literature doesn't answer all your questions.

Pricing on any accessories shown can be found by keying the part number into the search box on our website.

The specifications listed in this brochure are subject to change by the manufacturer and therefore cannot be guaranteed to be correct. If there are aspects of the specification that must be guaranteed, please provide these to our sales team so that details can be confirmed.

